

# Re-use tanks and fluff collectors



W455H  
Base with removable lint compartment

## Features and benefits

- Tanks for the re-use of water or solvent – for lower utility costs
- The re-use tanks are integrated in the base – space saving
- Fluff collectors prevent the drainpipe from becoming clogged
- Base with removable lint compartment in the front of the machine for easy cleaning and maintenance

## FLUFF COLLECTORS

1



Suitable for models: W455H, W465H, W475H/N/S, W4105H/N/S, W4130H/N/S  
Material: Stainless steel.  
Feature: Filter for easy cleaning, 25 l, 45 l and 75 l. The 25 l collector can be connected to the base frame of W455H.  
Drain connection:  $\varnothing$  32 (25 l)  
 $\varnothing$  50 (45 l, 75 l)

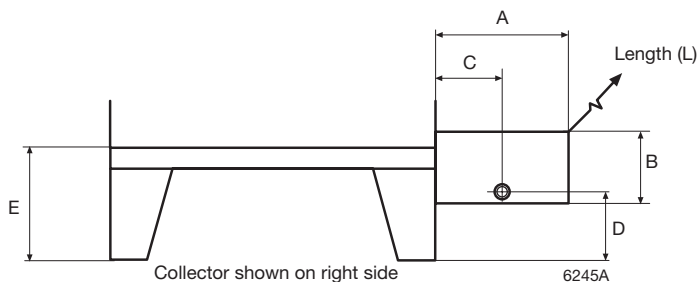
	A	B	L
25l	280	165	615
45l	345	220	680
75l	480	215	820

W455H  
C = 155  
D = 95 (E=200)  
D = 165 (E=290)

2



Suitable for models: W455H  
Material: Stainless steel.  
Feature: Filter for easy cleaning. The collector can be connected to the base frame of W455H on any side or rear of the machine. Including cover and hoses.



## BASE; with removable fluff compartment

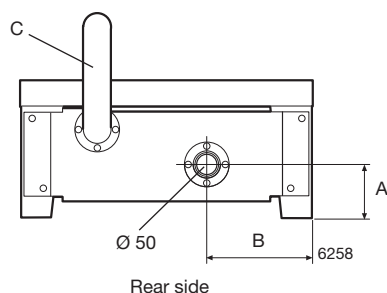
3



Suitable for model: W455H  
Material: Stainless steel.  
Content: 15 litres.  
Feature: Easy to maintain and clean.  
Drain connection:  $\varnothing$  50

A	B
110	220

C Drain from machine

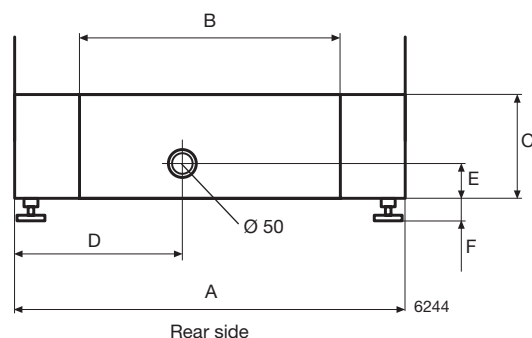


4



Suitable for models: W465H, W475H, W4105H  
Material: Galvanised, grey painted steel with stainless steel lint compartment.  
Content: 33 litres.  
Drain connection:  $\varnothing$  50

	A	B	C	D	E	F
W465H, W475H, W4105H	700	470	185	300	60	20-50



## BASE; with integrated tank

5

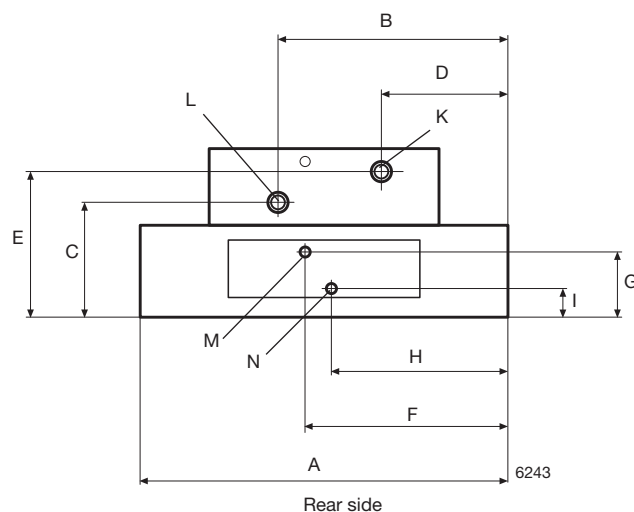


Suitable for models: W4130H, W4180H, W4240H, W4300H  
 Material: Galvanised steel with a stainless steel tank and front panel.  
 Feature: For re-use of water/solvent. Including pump, filter, valves, hose and wire harness for connection to the machine.  
 Content: 120 litres (W4130H), 145 litres (W4180H), 160 litres (W4240H, W4300H).



	A	B	C	D	E	F	G	H	I
W4130H	900	570	300	300	380	500	170	430	75
W4180H	960	600	300	330	380	530	170	460	75
W4240H	1010	630	300	350	380	560	170	490	75
W4300H	1010	630	300	350	380	560	170	490	75

K Drain ø 75 from machine to drain  
 L Drain ø 75 from overflowed tank to drain  
 M Cold water connection, DN20  
 N Connection for cleaning tank



## TANKS; for re-use of water or solvent

6

Suitable for models: 140 l tank- W475N/S, W485N/S, W4105N/S, W4130N/S  
 200 l tank- W4180N/S, W4250N/S  
 Material: Stainless steel  
 Feature: For re-use of water/solvent. Including pump, filter, valves, hose and wire harness for connection to the machine.  
 Content: 140 or 200 litres



Regarding data, see separate product data sheet.

Pos.	Dimensions in mm			High extraction washer extractors						
	Height	Width	Depth	W455H	W465H/W475H	W4105H	W4130H	W4180H	W4240H	W4300H
1	165	Width, same as the machine	Depth, same as the machine	9889180-10						
1	230				9889180-21					
1	220					9889180-02	9889180-22			
2	165			9889180-16						
3	290			9889183-60						
4	190		Add 260 mm to the depth of each machine		9889185-14					
4	190					9889186-24				
5	250		Add 380 mm to the depth of each machine				9889187-17 (50Hz)	9889188-17 (50Hz)	9889189-57 (50Hz)	9889190-17 (50Hz)
5	250						9889187-18 (60Hz)	9889188-18 (60Hz)	9889189-58 (60Hz)	9889190-18 (60Hz)
				W475N/S, W485N/S, W4105N/S, W4130N/S					W4180N/S, W4250N/S	
6	See separate leaflet			9888038-25 (50Hz)	9888038-25 (50Hz)	9888038-25 (50Hz)	9888038-25 (50Hz)			
6				9888038-26 (60Hz)	9888038-26 (60Hz)	9888038-26 (60Hz)	9888038-26 (60Hz)			
6								9888038-18 (50Hz)	9888038-18 (50Hz)	
6								9888038-19 (60Hz)	9888038-19 (60Hz)	
6	Drain valve box only			9888038-23 (50Hz)	9888038-23 (50Hz)	9888038-23 (50Hz)	9888038-23 (50Hz)	9888038-23 (50Hz)	9888038-23 (50Hz)	
6				9888038-24 (60Hz)	9888038-24 (60Hz)	9888038-24 (60Hz)	9888038-24 (60Hz)	9888038-24 (60Hz)	9888038-24 (60Hz)	